

MIRROR

MIR 505 ONE-WAY MIRROR

INDOOR INSTALLATION

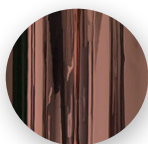


See without being seen

BRONZE ONE-WAY MIRROR

DESCRIPTION

The one-way mirror phenomenon. From the outside, a perfect mirror. From the inside, a total transparency. For clear glass and double glazing smaller than 1.20 m², the MIR 505 is the best solution for seeing from the inside, while offering a mirror effect from the outside. You keep the transparency of your glass while preserving your privacy.



Durability: 12 to 15 years for a vertical application in Central Europe.



Use: For clear glass and double glazing smaller than 1.20 m².



Maintenance : after 30 days with a usual cleaning solution (non abrasive, without ammonia...). Cleaning products that could scratch are not recommended.



Storage: 2 years from delivery. This film must be stored away from excessive humidity and sunlight, at a temperature below 38°C.

In order to meet high standards, we recommend that you do not mix films from different productions

INFORMATION

MATERIAL :PET
ADHESIVE :Acrylic polymer 25 gr/m²
LINER :Siliconized PET 23 microns
THICKNESS :60 microns
COLOR :Bronze
APPLICATION SIDE :Internal
TRANSMISSION UVA :6%
APPLICATION T° :min, + 5°C
STANDARDS :EUROCLASSES
FIRE RANTING :B-s1,d0
GUARANTEE :5 Years inside*

* For glazing not exposed to the sun

DIMENSIONS

By roll :



1,52 x

10 m
30 m

Application
Note



Video of the
installation



Method of application

The surface to be bonded must be free of dust, grease or any other contaminant. Some materials such as polycarbonate can cause bubbling problems. A compatibility test is therefore recommended. Possibility to install on plexiglass and polycarbonate.

Production monitoring and standards

In order to constantly improve our productions, we may have to modify without notice the colors and manufacturing processes. We recommend to our users, before applying our films, to make sure that they are exactly suitable for the intended use and to comply with the standards in force.